

# **Appropriate Assessment Screening Draft Tipperary Heritage Strategy 2025-2030**

**Gerard Tobin, BSc, MA**  
**Ecological Consultant**  
**Email: [gjtobin@gmail.com](mailto:gjtobin@gmail.com)**  
**Phone: 087 2233587**

<b>Table of contents:</b>	<b>Page Number</b>
<b>Introduction and terms of Reference.....</b>	<b>3.</b>
<b>Methodology.....</b>	<b>7.</b>
<b>Screening/Description of project area characteristics.....</b>	<b>14.</b>
<b>Identification of Natura 2000 sites and Compilation of information on their qualifying Interests and conservation objectives.....</b>	<b>15.</b>
<b>List of Natura 2000 sites.....</b>	<b>16.</b>
<b>Natura 2000 sites:anticipated impacts.....</b>	<b>23.</b>
<b>Screening Conclusion and Statement.....</b>	<b>26.</b>
<b>Bibliography.....</b>	<b>28.</b>

Gerard Tobin, BSc (Zoo), M.A., is an Ecological Consultant with 30 years' experience of working in this field. He is a member of the Ecologist Panel with N.P.W.S. and a member of the Bat Expert Panel with both N.P.W.S and the Heritage Council.

His sample client list includes Tipperary County Council, South Dublin County Council, Roscommon Co. Co, Mayo Co. Co., McConville and Associates Landscape Architects, Heritage Council, NPWS, William McGarry Engineers, Muyliaert & Associates Environmental Consultants., Fewer Harrington Lawlor & Partners Architecture & Engineering Specialists, Bluett and O'Donoghue Architecture and Engineering Specialists, among others.

He has advised South Dublin County Council on the control and management of Giant Hogweed and Japanese Knotweed in the area around Loughlinstown, Co. Dublin.

From 1998 to 2019 he was a visiting lecturer in UCD, in the Science and Archaeology Departments, lecturing at post graduate (Master's Degree) level to students in a Sustainable Development Module (MSc. World Heritage Management).

## **Introduction and Terms of Reference**

### **Introduction**

This is an appropriate assessment screening for The Draft Tipperary Co. Co. Heritage Strategy. County Tipperary Heritage Strategy sets out the high-level vision, mission and strategic objectives for the management and protection of heritage in the county. The development and expansion of heritage services in the county includes a hierarchy of plans and will involve the publication of Local Action Plans, for elements of heritage such as biodiversity and other heritage disciplines as may arise. These action plans will set out specific objectives and actions for managing and protecting heritage within the context of the County Heritage Strategy. The heritage strategy and associated action plans will ensure that the Heritage Act 1995 and national and regional heritage policy are translated to local actions and address local needs in a coordinated and effective way. The Heritage Strategy provides the context for Tipperary County Council to work with and support local communities and custodians.

The proposed Strategies will include:

Promoting awareness and appreciation of the Heritage of the county: Understanding is the key to appreciation, and we can only celebrate and raise awareness of our rich heritage when we fully appreciate it. Promoting awareness is at the very core of this plan. Our heritage is shared between all of us and when we work together to promote its value and benefits we are on the road to protecting it. Engagement with all of our citizens is the key and the

Heritage Forum is committed to ensure that knowledge and awareness of our heritage reaches the widest possible audience and that its value and benefit is something that reaches everyone.

### **1. Promote awareness.**

1.1 Facilitate collaboration and networking between local heritage groups, key heritage stakeholders and organizations and the local authority through a programme of conferences, seminars and workshops through the life time of the plan.

1.2 To continue funding support for local groups, communities and Council Services to facilitate showcasing their work and local heritage during National Heritage Week

1.3 Highlight Heritage Assets including lesser known sites and artefacts as well as cultural heritage both tangible and intangible through traditional and new forms of media.

1.4 Provide training opportunities for groups and communities to support them in protecting and raising awareness of their local heritage (know your 5k, oral heritage, social media etc).

1.5 Seek to promote engagement with young people through targeted activities during heritage week and explore developing suitable heritage related material aimed at younger audiences.

1.6 Circulate a regular monthly heritage newsletter, highlighting upcoming events, project updates/successes and funding opportunities.

1.7 To advocate for improvements to access and appropriate information/interpretation at heritage sites.

1.8 Work with local authority colleagues through Creative Ireland programme, Commemorations, Culture night, Bealtaine and other relevant programmes to highlight aspects of heritage and its value.

1.9 To work with the relevant statutory bodies to highlight protection afforded to all aspects of heritage and to communicate this to the public

1.10 Collaborate with relevant council services to provide workshops for groups and organisations on funding applications and funding schemes.

### **2. Conservation and caring for heritage sites and objects.**

Protection and conservation of our heritage are central to this plan. We will promote best practice in terms of conserving our heritage and provide advice and training where the need arises to ensure its protection into the future.

2.1 To deliver a programme of training events for local volunteers and heritage groups to provide practical advice and guidance on conservation and maintenance of heritage sites.

2.2 Support relevant staff training within the local authority with regard to heritage assets in council ownership.

2.3 Host grant clinics (in partnership with other council services) for communities and interested parties focusing on heritage funding supports offered through various departments in the council.

2.4 Support guardians of our heritage both public and private through managing relevant funding schemes such as Community Monuments Fund and Historic Towns Initiative and any other relevant schemes that may come throughout the lifetime of the plan.

2.5 Complete case studies on conservation projects documenting best practice and climate mitigation elements.

2.6 Set up a Walled Towns Forum of interested parties from each of the four Walled Towns in the Irish Walled Towns Network- use the forum to promote maintenance of the Town walls in partnership with the Local Authority and/or local groups and also to facilitate interpretation and other projects through the funding scheme.

2.7 Continue to support the inclusion of the rock of Cashel on the UNESCO World Heritage list as part of the Royal Sites of Ireland through active participation on the Working Group and Steering group and in any other areas that arise throughout the lifetime of this plan.

2.8 Commission an audit of archaeological and built heritage assets in council ownership and assess their vulnerability with regards to the impact of climate change.

2.9 Promote awareness of the need for the conservation and proper storage of artefacts and promote services of our Museums, Local Studies, Archives and Heritage Centres.

2.10 Advocate for funds to carry out assessments on Council owned sites to support funding applications for necessary conservation works

### **3. Research and Heritage Data**

Gathering and dissemination of information on the heritage of our county is an important objective of our heritage plan. The data we gather informs much of our projects. Our challenge with the current plan is that we have a geographical change in the area we are working in and we must broaden our horizons to gather the data that tells us all the stories of Tipperary. Material gathered not only promotes awareness and protection of these sites but can also be used to interpret them.

3.1. Commission/Support surveys and studies of aspects of the county's heritage and landscape

3.2. Support the work of the Irish Community Archive (iCAN) in Tipperary and, in partnership with them, seek to increase the number of Tipperary sites by 10 during the lifetime of this plan

3.3. Use the Heritage Office iCAN website [www.heritagetipperary.org](http://www.heritagetipperary.org) as a tool to facilitate making heritage data collected in one off projects accessible to the public where appropriate .

3.4. Seek to publish commissioned research by the Heritage Office where possible either in print or on [www.heritagetipperary.org](http://www.heritagetipperary.org).

3.5. Seek to pilot a publication grant scheme for local authors publishing books on aspects of the county's history and heritage .

3.6. Investigate hidden or overlooked heritage assets as a basis for action 1.3 and explore options with regards to creating alternative heritage trails.

3.7. Share where appropriate datasets or survey reports with relevant Council Service

The values of County Tipperary Heritage Strategy are informed and shaped by the values and goals of the County Tipperary Local Economic and Community Plan 2023-2029 (LECP) and previous Tipperary County Council's Heritage Council Strategic Plans.

### **The Heritage Strategy in Context**

#### The Policy Context

County Tipperary Heritage Strategy 2025-2030 is informed by and aligned with national policy: 'Heritage Ireland 2030' the national strategy for the protection, promotion and management of Ireland's heritage; 'Our Place in Time' the Heritage Council Strategic Plan 2023- 2028'; The 'National Biodiversity Action Plan 2023-2030'; 'Project Ireland 2040', the 'National Development Plan 2023-2030', the 'Climate Change Sectoral Adaptation Plan for Built and Archaeological Heritage' and the 'National Strategy for Vernacular Heritage'.

County Tipperary Heritage Strategy is aligned with local policy and supports the delivery of the Local Biodiversity Action Plan aligning with the National Biodiversity policy.

The purpose of this Appropriate Assessment Screening is to ascertain whether the high-level vision, mission and strategic objectives for the management and protection of heritage in County Tipperary, as outlined in the Draft Heritage Strategy 2025-2030, have the potential to negatively impact Natura 2000 sites within the possible Zone of Impact (Zoi).

The Appropriate Assessment Screening is carried out in accordance with the requirements of Article 6(3) of the EU Habitats Directive (Directive 92/43/EEC) and in line with the Guidance for Planning Authorities entitled "*Appropriate Assessment of Plans and Projects in Ireland*" as published by the Department of the Environment, Heritage and Local Government in December 2009.

The 1992 Habitats Directive requires member states to designate areas of their territory containing a representative sample of important habitats and species. These areas are known as Natura 2000 sites, and in Ireland they include Special Areas of Conservation (SAC's) and Special Protection Areas (SPA's). Article 6(3) and (4) require that an Appropriate Assessment be

carried out for these sites where projects, plans or proposals are likely to have an effect on the protected site.

Article 6(3) of the Habitats Directive states: *‘any plan or project not directly connected with or necessary to the management of the site but likely to have a significant effect thereon, either individually or in combination with other plans or projects, shall be subject to appropriate assessment of its implications for the site in view of the site’s conservation objectives. In the light of the conclusions of the assessment of the implications for the site and subject to the provisions of paragraph 4, the competent national authorities shall agree to the plan or project only after having ascertained that it will not adversely affect the integrity of the site concerned and, if appropriate, after having obtained the opinion of the general public’.*

Article 6(4) states: *‘if, in spite of a negative assessment of the implications for the site and in the absence of alternative solutions, a plan or project must nevertheless be carried out for imperative reasons of overriding public interest, including those of economic or social nature, the Member State shall take all compensatory measures necessary to ensure that the overall coherence of Natura 2000 is protected. It shall inform the Commission of the compensatory measures adopted. Where the site concerned hosts a priority natural habitat type and/or a priority species the only considerations which may be raised are those relating to human health or public safety, to beneficial consequences of primary importance for the environment or, further to an opinion from the Commission, to other imperative reasons of overriding public interest’.*

## **Methodology**

The methodology as set out in *Appropriate Assessment of Plans and Projects in Ireland – Guidance for Planning Authorities* (December 2009) has been followed.

Stage 1 The aim of Stage 1, ‘Screening’ is to determine whether or not Stage 2, the Appropriate Assessment is required, i.e. to determine whether or not the Plan is likely to negatively affect the conservation objectives on any Natura 2000 site. This is done by examining the design of the proposed project; and the conservation objectives of any Natura 2000 sites that might potentially be affected.

Stage 2, The aim of the ‘Appropriate Assessment’ proper, is to identify any significant negative impacts that the plan might have upon Natura 2000 sites and to propose changes to the project design that will avoid any such

negative impacts. The project design should then be amended accordingly, thereby avoiding the need to progress to Stage 3, which would require the implementation of measures to mitigate or compensate for the identified negative impacts on Natura 2000 sites. A key consideration of Appropriate Assessment is that the Plan or Project under consideration must take account of potential impacts on Natura 2000 sites 'in combination' with other plans or projects.

Stage 3 - Alternative Solutions Following a Stage 2 negative result, that is, adverse effects cannot be excluded; an examination of alternative solutions or options, described in Article 6(4) of the Directive should be examined. These alternative solutions which should have been identified in the appropriate assessment stage should then return to be reassessed by a Stage 2 appropriate assessment, similar to a new plan or a variation of an existing plan. Alternatively, should no alternative solution which does not adversely effect a Natura 2000 site be identified, the 'least damaging' option should be considered with regard to Stage 4.

Stage 4 - Imperative Reasons of Overriding Public Interest (IROPI) / Derogation Described as the derogation process of Article 6(4), this final stage allows for the plan or project to proceed in the knowledge that it will have adverse effects on the conservation objectives and as a consequence the integrity of a Natura 2000 site. This is essentially an assessment of the compensatory measures which should be proposed to offset damage to the site and should be practical, implementable, enforceable and approved by the Minister and referred to the European Commission.

In accordance with this guidance, the following four steps have been used to produce this stage 1 screening statement:

- Description of project and project area.
- Identification of Natura 2000 sites and compilation of information on their qualifying interests and conservation objectives.
- Assessment of Likely Effects/ assessment of Cumulative Effects
- Screening conclusion and statement.

The overall aim of the Habitats Directive (92/43/EEC) is to maintain or restore the favourable conservation status of habitats and species of Community interest. These habitats and species are listed in the Habitats Directive and the Birds Directive (2009/147/EC), and Special Areas of Conservation (SACs) and Special Protection Areas (SPAs) are designated to afford protection to

the most vulnerable of these. Both designations are often referred to as 'European sites' and are collectively known as the 'Natura 2000 network'. The Habitats and Bird Directives are transposed into Irish law by (inter alia) the European Communities (Birds & Natural Habitats) Regulations 2011 (S.I.477 of 2011) (see the Irish Statute Book [www.irishstatutebook.ie](http://www.irishstatutebook.ie)).

As required under the Habitats Directive, screening must be undertaken to assess if there is a possibility of the project having an effect, either individually or in combination with other plans or projects, on a Natura site, in view of the conservation objectives of that Natura site. If a possibility (or uncertainty regarding whether there is a possibility) exists (i.e. a potential pathway for impact on an EU site exists), the project is 'screened in' in relation to the Natura site(s) involved. An 'appropriate assessment' is then undertaken to determine beyond reasonable scientific doubt whether there will be an adverse effect on the integrity of these Natura site(s), based on (inter alia) the nature of the impact and the effectiveness of any mitigation measures proposed. The appropriate assessment must (a) identify, in light of the best scientific knowledge, all aspects of the development that would affect Natura sites; and (b) contain complete and definitive findings capable of removing all reasonable scientific doubt that the development would adversely affect the integrity of those sites.

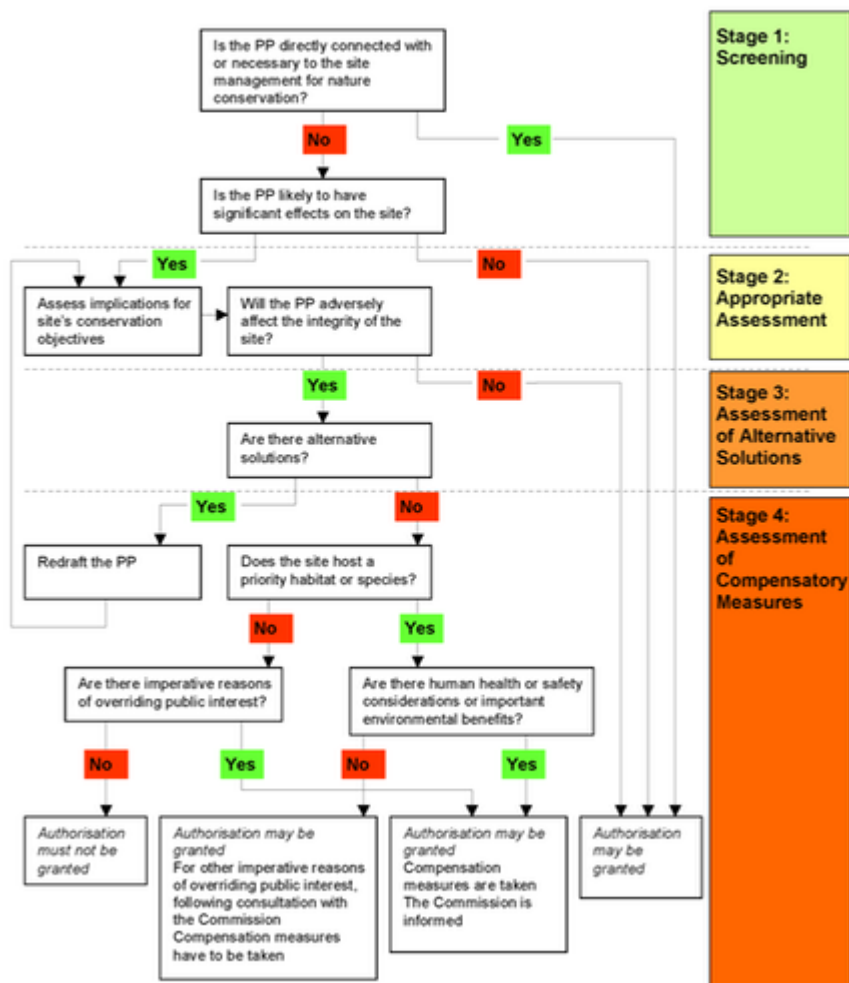
(Note, screening is often referred to as 'Stage 1', and appropriate assessment as 'Stage 2'.)

The above process cannot have any deficiencies or data / information gaps (or 'lacunae') and must contain complete, precise and definitive findings and conclusions capable of removing all reasonable scientific doubt as to the effects of a project on the Natura site(s) concerned.

The above process is set out in Article 6(3) of the Habitats Directive and Regulation 42 of S.I.477 or 2011. Recent rulings from the European Court of Justice and Irish case law provide further legal clarification.

Furthermore, detailed guidance is set out in the European Commission (2018) Notice Managing Natura 2000 sites: The provisions of Article 6 of the 'Habitats' Directive 92/43/EEC.

The following flowchart illustrates the steps involved in the process of Appropriate Assessment:



### What is a NATURA Impact Statement?

S.I.477 of 2011 defines a Natura Impact Statement as "a report comprising the scientific examination of a plan or project and the relevant European Site or European Sites, to identify and characterize any possible implications of the plan or project individually or in combination with other plans or projects in view of the conservation objectives of the site or sites, and any further information including, but not limited to, any plans, maps or drawings, scientific information or data required to enable the carrying out of an Appropriate Assessment; ..."

The NIS is a scientific examination that identifies and characterizes any possible impact the project may have (either individually or in combination with other plans and projects) on the conservation objectives of any 'screened-in' Natura site(s), taking into account the full scope of these objectives, whether generic or site specific. It must also identify and detail any proposed mitigation measures needed to avoid, reduce or eliminate the risk of such impact. The NIS must also present the necessary analysis to demonstrate how any proposed mitigation measures will avoid or remove the

risks of those adverse effects identified, so that the final analysis is undertaken in the context of the predicted residual effects.

The precautionary principle should be applied throughout the preparation of the NIS. For example, if it cannot be demonstrated that no adverse effect will arise, such an effect must be assumed. As a scientific examination, all findings arrived at must be clear and precise, and must be supported by data, evidence and analysis and by best scientific knowledge and objective information, including baselines and trends. All sources of information must also be cited.

In addition to baseline information and survey results available online and elsewhere an ecological survey may be needed to assess if an Annex I habitat or Annex II species, or a supporting habitat or species(\*), is present. The type of survey needed will vary greatly, from a general habitat walkover survey to a more detailed survey involving repeated visits. (\* As per ECJ Case C-461/17 Brian Holohan and Others v An Bord Pleanála ).

The following are examples of the types of surveys and field assessments that may be required.

➤ Ex situ, where the project is located outside the Natura site:

A habitat walkover survey to assess if the project area contains a habitat used by a species listed as a qualifying interest of the Natura site, or a habitat supporting a species upon which the qualifying interest depends. For example, the project area may contain a habitat used for foraging by a specific bird species listed as a Special Conservation Interest (SCI) of a nearby SPA.

A hydrological assessment to ascertain if proposed drainage associated with a project will disrupt the hydrological conditions underpinning a nearby SAC.

➤ In situ, where the project is located within a Natura site:

An ecological survey to determine if a habitat listed as a qualifying interest of the Natura site (i.e. an Annex I habitat, such as wet heath) is present or absent within the project area.

Similarly, in the case of a particular species listed as a qualifying interest of the Natura site (i.e. an Annex II such as Desmoulin's whorl snail (*Vertigo moulinsiana*)), a species survey or a species habitat survey to determine if that species occurs or has the potential to occur within the project area.

The following indicate some of the general issues that can arise:

➤ Where there is a hydrological connection to a Natura site, the NIS must address potential impacts on water quality and aquatic species and habitats. This will include an assessment of likely sources

and pathways (such as relevant watercourses or 'hotspot' areas) for runoff from the site, in relation to both sediment and nutrients. Other issues such as altered hydrology and nutrient enrichment may also be relevant.

➤ In relation to SPAs, the NIS should consider (as relevant) the known location of breeding sites within the SPA, whether the project area contains suitable breeding, foraging or roosting habitats, and whether disturbance impacts arise.

Typically, a detailed field survey is required if the project is located within a Natura site and where the qualifying interests include terrestrial habitats and species. In situations where all the qualifying interests are aquatic in nature, the focus of the scientific examination should be on avoiding or eliminating the risk of any potential impacts (e.g. sediment and nutrient runoff, altered hydrology, nutrient enrichment) on the aquatic habitat or species.

Regarding terrestrial-based qualifying interests, the nature of these will determine the type of survey(s) required. Given the range of Annex habitats and species, it is not possible to outline the appropriate survey method(s) for each. Some Annex II terrestrial species require specialist expertise as they may not be easily observed.

Note, relevant data from recent or ongoing surveys undertaken by various bodies may be available, thereby possibly reducing the need for direct survey work during the preparation of the NIS.

Office of the Planning Regulator (2021) (OPR) Practice Note PN01

Appropriate Assessment Screening for Development Management states that the effects of a project may include direct or indirect effects on a European Site. Indirect effects can occur where further development is associated with a proposed development and it is this secondary element that is a risk factor to a site. For example: enabling works such as site clearance can lead to soil erosion with impacts on watercourses and downstream impacts to a European site, or ground investigations or haulage routes involving heavy machinery may have to traverse a European site to access the development site.

Indirect effects may also arise due to pathways or connections to a European site. For example, a proposed development may have no direct effect on a site due to distance, however a hydrological connection may result in indirect effects on that site due to changes in water flows or construction related emissions. Similarly there may be indirect impacts to European sites via impacts to non-Qualifying Interest habitats within a site or such habitats outside a site, or via impacts to species for which a site has been designated beyond the site where this might affect the conservation objectives of the site. This is particularly relevant in relation to SPAs where areas outside the European site are often important for bird species.

Impact v Effect: In the context of appropriate assessment there is a clear difference between the 'impact' which is the source ( Source-Pathway-Receptor model) and the 'effect' which is how it relates to the conservation objectives. For example:

Impact: ground clearance and release of silt laden water into adjacent receiving watercourse.

Effect: possibility to undermine the conservation objective to restore the favourable conservation of those Annex II species including Atlantic Salmon and Freshwater Pearl Mussel, which require very low levels of sedimentation at their breeding gravels.

In-Combination Effects: Some projects are unlikely to have significant effects on their own. However, the effects in combination with other plans or projects could be significant. The in-combination assessment should concentrate on projects/plans that could in fact act in-combination with the current project to affect site conservation objectives. For example, in a site where Fresh Water Pearl Mussel is a Qualifying Interest, a key question is what other plans/projects may involve discharges to the relevant river. This allows the assessment of in-combination impacts to be focused on the relevant impacts. In the case of projects, in-combination impacts of both plans and projects must be considered (i.e. not solely other projects). It should also be noted that plans/projects extend beyond those covered by the 2000 Act. In-combination effects must examine plans or projects that are:

Projects completed,

Projects approved but not started or uncompleted,

Projects proposed, i.e. for which an application for approval or consent has been made, including refusals subject to appeal and not yet determined,

Proposals in adopted plans,

Proposals in finalized draft plans formally published or submitted for consultation or adoption.

Plans and projects that are not yet proposed do not generally have to be taken into account in the assessment of in-combination effects, even if they are part of an overarching masterplan. The exception is where the project is considered to be functionally interdependent with the development before the competent authority.

The consideration of in-combination effects is not restricted to similar types of plans or projects covering the same sector of activity (e.g. a series of housing projects). All types of plans or projects that could, in-combination with the project under consideration, have a significant effect, should be taken into account.

This proposed Draft Heritage Strategy has been considered from the perspective of the proposed strategy itself and also in terms of the potential for "in combination" effects with other projects planned for the area.

.In-combination effects can be defined as impacts on a Natura site that result from incremental changes caused by other past, present or reasonably foreseeable actions together with the project being assessed.

Appropriate assessment requires an assessment of possible in-combination effects. Section 3.5.3 of the EC Commission Notice Managing Natura 2000 sites: The provisions of Article 6 of the 'Habitats' Directive 92/43/EEC (2018) details the process: "When determining likely significant effects, the combination with other plans and/or projects should also be considered to take account of cumulative impacts during the assessment of the plan or project in question. The in-combination provision concerns other plans or projects which have been already completed, approved but uncompleted or actually proposed."

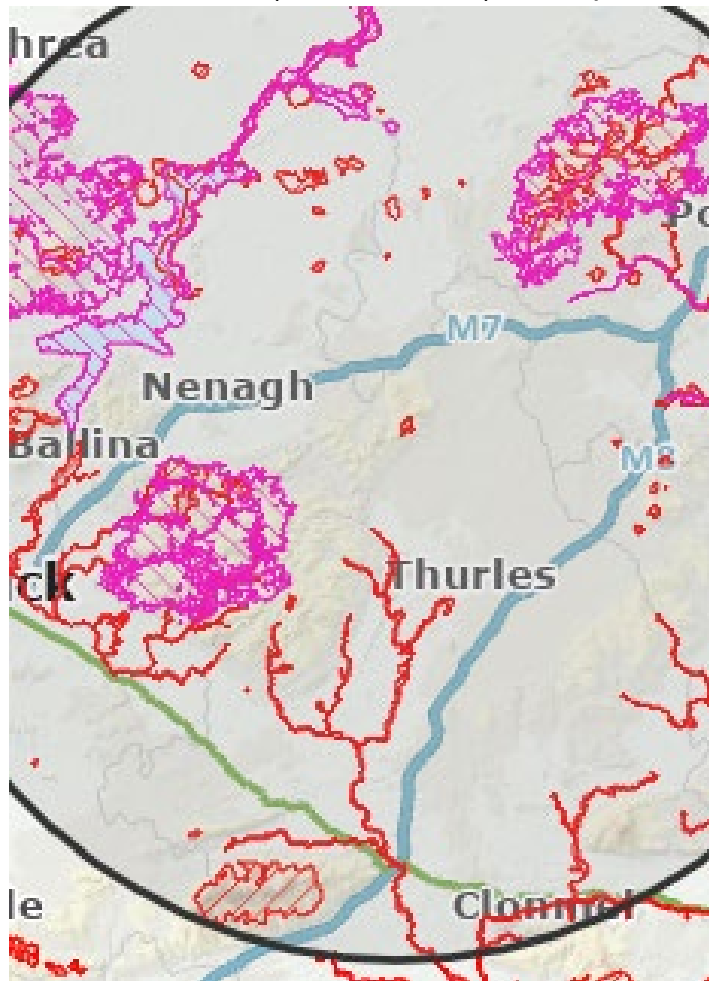
### **Stage 1 Screening**

#### **Description of project and project area characteristics -**

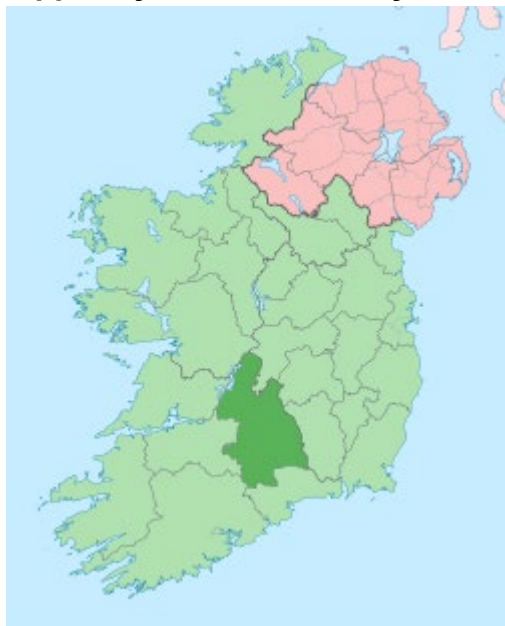
The proposed project is the creation of a Heritage Strategy for Tipperary County Council to set out the high-level vision, mission and strategic objectives for the management and protection of heritage in the county.

There are no works proposed other than what is reasonably required to facilitate the creation of this strategic Plan. The County occupies a geographical location that contains a number of Natura 2000 sites and borders counties that also contain Natura 2000 sites.

Natura 2000 sites (hatched areas) within possible impact zone.



## Tipperary Co Co boundary/ Receiving environment



:

### **Identification of Natura 2000 sites and compilation of information on their qualifying interests and conservation objectives.**

There are a number of Natura 2000 sites within the possible impact zone of the proposed Tipperary County Council Strategic Heritage Plan. This report considers these sites but also sites that are not restricted to County Tipperary, where a potential pathway exists and proximity to the County boundary allows, sites in neighbouring counties.

### **Conservation objectives (Generic) for Natura 2000 sites:**

Conservation objectives can be stated as follows:

- Avoid deterioration of the habitats of the qualifying species and species of special conservation interest or significant disturbance to these species thus ensuring the integrity of the sites are maintained.
- To ensure for the qualifying species and species of special conservation interest that the following are maintained in the long-term:
  - (1) The population of the species as a viable component of the site
  - (2) The distribution and extent of habitats supporting the species

The following NPWS Generic Conservation Objectives have been considered in the screening:

- For SACs, to maintain or restore the favourable conservation condition of the Annex I habitat(s) and/or the Annex II species for which the SAC has been selected;
- For SPAs, to maintain or restore the favourable conservation condition of the bird species listed as Special Conservation Interests for this SPA. Where available, Site-Specific Conservation Objectives (SSCOs) designed to define favourable conservation status for a particular habitat or species at that site have been considered.

**List of Natura 2000 sites in and in proximity to Tipperary:**

Site Name: Anglesey Road SAC (002125)

Site Name: Arragh More (Derrybreen) Bog SAC (002207)

Site Name: Ballyduff/Clonfinane Bog SAC (000641)

Site Name: Blackwater River (Cork/Waterford) SAC (002170)

Site Name: Bolingbrook Hill SAC (002124)

Site Name: Clare Glen SAC (000930)

Site Name: Galtee Mountains SAC (000646)

Site Name: Keeper Hill SAC (001197)

Site Name: Kilcarren-Firville Bog SAC (000647)

Site Name: Kilduff, Devilsbit Mountain SAC (000934)

Site Name: Liskeenan Fen SAC (001683)

Site Name: Lough Derg (Shannon) SPA (004058)

Site Name: Lough Derg, North-east Shore SAC (002241)

Site Name: Lower River Shannon SAC (002165)

Site Name: Lower River Suir SAC (002137)

Site Name: Middle Shannon Callows SPA (004096)

Site Name: Moanour Mountain SAC (002257)

Site Name: Philipston Marsh SAC (001847)

Site Name: Redwood Bog SAC (002353)

Site Name: River Barrow and River Nore SAC (002162)

Site Name: River Little Brosna Callows SPA (004086)

Site Name: River Shannon Callows SAC (000216)

Site Name: Scohaboy (Sopwell) Bog SAC (002206)

Site Name: Sharavogue Bog SAC (000585)

Site Name: Silvermine Mountains SAC (000939)

Site Name: Silvermines Mountains West SAC (002258)

Site Name: Slievefelim to Silvermines Mountains SPA (004165)

**Qualifying species and habitats: Natura 2000 sites:**

Site Name	Qualifying Species and habitats
Anglesey Road SAC (002125)	Species-rich <i>Nardus</i> grasslands, on siliceous substrates in mountain areas (and submountain areas, in Continental Europe) [6230]
Arragh More (Derrybreen) Bog SAC (002207)	Degraded raised bogs still capable of natural regeneration [7120]
Ballyduff/Clonfinane Bog SAC (000641)	Active raised bogs [7110] Degraded raised bogs still capable of natural regeneration [7120] Depressions on peat substrates of the <i>Rhynchosporion</i> [7150] Bog woodland [91D0]
Blackwater River (Cork/Waterford) SAC (002170)	Estuaries [1130] Mudflats and sandflats not covered by seawater at low tide [1140] Perennial vegetation of stony banks [1220] <i>Salicornia</i> and other annuals colonising mud and sand [1310] Atlantic salt meadows ( <i>Glauco-Puccinellietalia maritima</i> ) [1330] Mediterranean salt meadows ( <i>Juncetalia maritimi</i> ) [1410] Water courses of plain to montane levels with the <i>Ranunculion fluitantis</i> and <i>Callitriche-Batrachion</i> vegetation [3260] Old sessile oak woods with <i>Ilex</i> and <i>Blechnum</i> in the British Isles [91A0] Alluvial forests with <i>Alnus glutinosa</i> and <i>Fraxinus excelsior</i> ( <i>Alno-Padion</i> , <i>Alnion incanae</i> , <i>Salicion albae</i> ) [91E0] <i>Margaritifera margaritifera</i> (Freshwater Pearl Mussel) [1029] <i>Austropotamobius pallipes</i> (White-clawed Crayfish) [1092] <i>Petromyzon marinus</i> (Sea Lamprey) [1095]

	Lampetra planeri (Brook Lamprey) [1096] Lampetra fluviatilis (River Lamprey) [1099] Alosa fallax fallax (Twaite Shad) [1103] Salmo salar (Salmon) [1106] Lutra lutra (Otter) [1355] Vandenboschia speciosa (Killarney Fern) [6985]
Bolingbrook Hill SAC (002124)	Northern Atlantic wet heaths with Erica tetralix [4010] European dry heaths [4030] Species-rich Nardus grasslands, on siliceous substrates in mountain areas (and submountain areas, in Continental Europe) [6230]
Clare Glen SAC (000930)	Old sessile oak woods with Ilex and Blechnum in the British Isles [91A0]  Vandenboschia speciosa (Killarney Fern) [6985]
Galtee Mountains SAC (000646)	Northern Atlantic wet heaths with Erica tetralix [4010] European dry heaths [4030] Alpine and Boreal heaths [4060] Species-rich Nardus grasslands, on siliceous substrates in mountain areas (and submountain areas, in Continental Europe) [6230] Blanket bogs (* if active bog) [7130] Siliceous scree of the montane to snow levels (Androsacetalia alpinae and Galeopsietalia ladani) [8110] Calcareous rocky slopes with chasmophytic vegetation [8210] Siliceous rocky slopes with chasmophytic vegetation [8220]
Keeper Hill SAC (001197)	Northern Atlantic wet heaths with Erica tetralix [4010]  Blanket bogs (* if active bog) [7130]
Kilcarren-Firville Bog SAC (000647)	Active raised bogs [7110] Degraded raised bogs still capable of natural regeneration [7120] Depressions on peat substrates of the Rhynchosporion [7150]

<p>Kilduff, Devilsbit Mountain SAC (000934)</p>	<p>European dry heaths [4030]  Species-rich Nardus grasslands, on siliceous substrates in mountain areas (and submountain areas, in Continental Europe) [6230]</p>
<p>Liskeenan Fen SAC (001683)</p>	<p>Calcareous fens with Cladium mariscus and species of the Caricion davallianae [7210]</p>
<p>Lough Derg (Shannon) SPA (004058)</p>	<p>Cormorant (<i>Phalacrocorax carbo</i>) [A017]  Tufted Duck (<i>Aythya fuligula</i>) [A061]  Goldeneye (<i>Bucephala clangula</i>) [A067]  Common Tern (<i>Sterna hirundo</i>) [A193]  Wetland and Waterbirds [A999]</p>
<p>Lough Derg, North-east Shore SAC (002241)</p>	<p>Juniperus communis formations on heaths or calcareous grasslands [5130] Calcareous fens with Cladium mariscus and species of the Caricion davallianae [7210] Alkaline fens [7230] Limestone pavements [8240] Alluvial forests with Alnus glutinosa and Fraxinus excelsior (Alno-Padion, Alnion incanae, Salicion albae) [91E0] Taxus baccata woods of the British Isles [91J0]</p>
<p>Lower River Suir SAC (002137)</p>	<p>Atlantic salt meadows (Glauco-Puccinellietalia maritima) [1330] Water courses of plain to montane levels with the Ranunculion fluitantis and Callitriche-Batrachion vegetation [3260] Hydrophilous tall herb fringe communities of plains and of the montane to alpine levels [6430] Old sessile oak woods with Ilex and Blechnum in the British Isles [91A0] Alluvial forests with Alnus glutinosa and Fraxinus excelsior (Alno-Padion, Alnion incanae, Salicion albae) [91E0] Taxus baccata woods of the British Isles [91J0] Margaritifera margaritifera (Freshwater Pearl Mussel) [1029] Austroptamobius pallipes (White-clawed Crayfish) [1092] Petromyzon marinus (Sea Lamprey) [1095] Lampetra planeri (Brook Lamprey) [1096] Lampetra fluviatilis (River Lamprey) [1099] Alosa fallax fallax (Twait Shad) [1103] Salmo salar (Salmon) [1106] Lutra lutra (Otter) [1355]</p>

Killeglan Grassland SAC	Semi-natural dry grasslands and scrubland facies on calcareous substrates (Festuco-Brometalia) * important orchid sites [6210]
Middle Shannon Callows SPA	Wigeon ( <i>Anas penelope</i> ) [A050], Black-tailed Godwit ( <i>Limosa limosa</i> ) [A156], Whooper Swan ( <i>Cygnus cygnus</i> ) [A038], Black-headed Gull ( <i>Chroicocephalus ridibundus</i> ) [A179], Lapwing ( <i>Vanellus vanellus</i> ) [A142], Wetland and Waterbirds [A999], Corncrake ( <i>Crex crex</i> ) [A122], Golden Plover ( <i>Pluvialis apricaria</i> ) [A140]
Moanour Mountain SAC (002257)	Northern Atlantic wet heaths with <i>Erica tetralix</i> [4010] European dry heaths [4030]
Philipston Marsh SAC (001847)	Transition mires and quaking bogs [7140]
Redwood Bog SAC (002353)	Active raised bogs [7110] Degraded raised bogs still capable of natural regeneration [7120] Depressions on peat substrates of the <i>Rhynchosporion</i> [7150]
River Barrow and River Nore SAC (002162)	Estuaries [1130] Mudflats and sandflats not covered by seawater at low tide [1140] Reefs [1170] Salicornia and other annuals colonising mud and sand [1310] Atlantic salt meadows ( <i>Glauco-Puccinellietalia maritima</i> ) [1330] Mediterranean salt meadows ( <i>Juncetalia maritimi</i> ) [1410] Water courses of plain to montane levels with the <i>Ranunculion fluitantis</i> and <i>Callitriche-Batrachion</i> vegetation [3260] European dry heaths [4030] Hydrophilous tall herb fringe communities of plains and of the montane to alpine levels [6430] Petrifying springs with tufa formation ( <i>Cratoneurion</i> ) [7220] Old sessile oak woods with <i>Ilex</i> and <i>Blechnum</i> in the British Isles [91A0] Alluvial forests with <i>Alnus glutinosa</i> and <i>Fraxinus excelsior</i> ( <i>Alno-Padion</i> , <i>Alnion incanae</i> , <i>Salicion albae</i> ) [91E0] <i>Vertigo moulinsiana</i> (Desmoulin's Whorl Snail) [1016] <i>Margaritifera margaritifera</i> (Freshwater Pearl Mussel) [1029] <i>Austroptamobius pallipes</i> (White-clawed

	<p>Crayfish) [1092]                  Petromyzon marinus (Sea Lamprey) [1095]                  Lampetra planeri (Brook Lamprey) [1096]                  Lampetra fluviatilis (River Lamprey) [1099]                  Alosa fallax fallax (Twaité Shad) [1103]                  Salmo salar (Salmon) [1106]                  Lutra lutra (Otter) [1355]                  Vandemboschia speciosa (Killarney Fern) [6985]</p>
River Little Brosna Callows SPA (004086)	<p>Whooper Swan (Cygnus cygnus) [A038]                  Teal (Anas crecca) [A052]                  Pintail (Anas acuta) [A054]                  Golden Plover (Pluvialis apricaria) [A140]                  Lapwing (Vanellus vanellus) [A142]                  Black-tailed Godwit (Limosa limosa) [A156]                  Black-headed Gull (Chroicocephalus ridibundus) [A179]                  Greenland White-fronted Goose (Anser albifrons flavirostris) [A395]                  Wigeon (Mareca penelope) [A855]                  Shoveler (Spatula clypeata) [A857]                  Wetland and Waterbirds [A999]</p>
Scohaboy (Sopwell) Bog SAC (002206)	<p>Degraded raised bogs still capable of natural regeneration [7120]</p>
Sharavogue Bog SAC (000585)	<p>Active raised bogs [7110]                  Degraded raised bogs still capable of natural regeneration [7120]                  Depressions on peat substrates of the Rhynchosporion [7150]</p>
Silvermine Mountains SAC (000939)	<p>Northern Atlantic wet heaths with Erica tetralix [4010]                  Species-rich Nardus grasslands, on siliceous substrates in mountain areas (and submountain areas, in Continental Europe) [6230]</p>
Silvermines Mountains West SAC (002258)	<p>Northern Atlantic wet heaths with Erica tetralix [4010]                  European dry heaths [4030]                  Calaminarian grasslands of the Violetalia calaminariae [6130]</p>
Slievefelim to Silvermines Mountains SPA (004165)	<p>Hen Harrier (Circus cyaneus) [A082]]</p>
River Little Brosna Callows SPA	<p>River Little Brosna Callows SPA 11.44                  Golden Plover (Pluvialis apricaria) [A140],                  Blackheaded Gull (Chroicocephalus ridibundus) [A179], Greenland White-fronted Goose (Anser albifrons flavirostris) [A395],                  Wetland and Waterbirds [A999], Whooper Swan (Cygnus cygnus) [A038], Wigeon (Anas penelope) [A050], Teal (Anas crecca) [A052],                  Lapwing (Vanellus vanellus) [A142], Black-</p>

	tailed Godwit ( <i>Limosa limosa</i> ) [A156], Pintail ( <i>Anas acuta</i> ) [A054], Shoveler ( <i>Anas clypeata</i> ) [A056]
Redwood Bog SAC	Redwood Bog SAC 12.31 Active raised bogs [7110], Degraded raised bogs still capable of natural regeneration [7120], Depressions on peat substrates of the <i>Rhynchosporion</i> [7150]
Lough Derg North east shore SAC	<i>Taxus baccata</i> woods of the British Isles [91J0], Alluvial forests with <i>Alnus glutinosa</i> and <i>Fraxinus excelsior</i> ( <i>Alno-Padion</i> , <i>Alnion incanae</i> , <i>Salicion albae</i> ) [91E0], <i>Juniperus communis</i> formations on heaths or calcareous grasslands [5130], Alkaline fens [7230], Calcareous fens with <i>Cladium mariscus</i> and species of the <i>Caricion davallianae</i> [7210], Limestone pavements [8240]
Lough Derg Shannon SPA	Goldeneye ( <i>Bucephala clangula</i> ) [A067], Tufted Duck ( <i>Aythya fuligula</i> ) [A061], Wetland and Waterbirds [A999], Common tern ( <i>Sterna hirundo</i> ) [A193], Cormorant ( <i>Phalacrocorax carbo</i> ) [A017]
Lower River Shannon SAC	Mudflats and sandflats not covered by seawater at low tide [1140], Sea lamprey ( <i>Petromyzon marinus</i> ) [1095], <i>Salicornia</i> and other annuals colonising mud and sand [1310], Otter ( <i>Lutra lutra</i> ) [1355], Atlantic salmon ( <i>Salmo salar</i> ) [1106], Mediterranean salt meadows ( <i>Juncetalia maritimi</i> ) [1410], Sandbanks which are slightly covered by sea water all the time [1110], Reefs [1170], <i>Molinia</i> meadows on calcareous, peaty or clayey-silt-laden soils ( <i>Molinion caeruleae</i> ) [6410], Water courses of plain to montane levels with the <i>Ranunculion fluitantis</i> and <i>Callitriche/Batrachion</i> vegetation [3260], Brook lamprey ( <i>Lampetra planeri</i> ) [1096], Atlantic salt meadows ( <i>Glauco-Puccinellietalia maritima</i> ) [1330], River lamprey ( <i>Lampetra fluviatilis</i> ) [1099], Coastal lagoons [1150], Perennial vegetation of stony banks [1220], Freshwater pearl mussel ( <i>Margaritifera margaritifera</i> ) [1029], Vegetated sea cliffs of the Atlantic and Baltic coasts [1230], Bottlenose dolphin ( <i>Tursiops truncatus</i> ) [1349], Alluvial forests with <i>Alnus glutinosa</i> and <i>Fraxinus excelsior</i> ( <i>Alno-Padion</i> , <i>Alnion incanae</i> , <i>Salicion albae</i> ) [91E0], Estuaries [1130], Large shallow inlets and bays [1160]
River Shannon and River Fergus SPA	Whooper Swan ( <i>Cygnus cygnus</i> ) [A038], Black-tailed Godwit ( <i>Limosa limosa</i> ) [A156],

	<p>Lapwing (<i>Vanellus vanellus</i>) [A142], Knot (<i>Calidris canutus</i>) [A143], Scaup (<i>Aythya marila</i>) [A062], Wigeon (<i>Anas penelope</i>) [A050], Black-headed Gull (<i>Chroicocephalus ridibundus</i>) [A179], Wetland and Waterbirds [A999], Ringed Plover (<i>Charadrius hiaticula</i>) [A137], Redshank (<i>Tringa totanus</i>) [A162], Golden Plover (<i>Pluvialis apricaria</i>) [A140], Curlew (<i>Numenius arquata</i>) [A160], Teal (<i>Anas crecca</i>) [A052], Dunlin (<i>Calidris alpina</i>) [A149], Greenshank (<i>Tringa nebularia</i>) [A164], Pintail (<i>Anas acuta</i>) [A054], Shoveler (<i>Anas clypeata</i>) [A056], Light-bellied Brent Goose (<i>Branta bernicla hrota</i>) [A046], Grey Plover (<i>Pluvialis squatarola</i>) [A141], Cormorant (<i>Phalacrocorax carbo</i>) [A017], Shelduck (<i>Tadorna tadorna</i>) [A048], Bar-tailed Godwit (<i>Limosa lapponica</i>) [A157]</p>
--	---

**Natura 2000 sites anticipated impacts:**

Site Name	Water quality reduction	Area reduction	Disturbance	Fragmentation	Density Reduction
Anglesey Road SAC (002125)	None anticipated	None anticipated	None anticipated	None anticipated	None anticipated
Arragh More (Derrybreen) Bog SAC (002207)	None anticipated	None anticipated	None anticipated	None anticipated	None anticipated
Ballyduff/Clonfinane Bog SAC (000641)	None anticipated	None anticipated	None anticipated	None anticipated	None anticipated
Blackwater River (Cork/Waterford) SAC (002170)	None anticipated	None anticipated	None anticipated	None anticipated	None anticipated
Bolingbrook Hill SAC (002124)	None anticipated	None anticipated	None anticipated	None anticipated	None anticipated
Clare Glen SAC (000930)	None anticipated	None anticipated	None anticipated	None anticipated	None anticipated
Galtee Mountains SAC (000646)	None anticipated	None anticipated	None anticipated	None anticipated	None anticipated
Keeper Hill SAC (001197)	None anticipated	None anticipated	None anticipated	None anticipated	None anticipated
Kilduff, Devilsbit Mountain SAC (000934)	None anticipated	None anticipated	None anticipated	None anticipated	None anticipated

Liskeenan Fen SAC (001683)	None anticipated	None anticipated	None anticipated	None anticipated	None anticipated
Lough Derg (Shannon) SPA (004058)	None anticipated	None anticipated	None anticipated	None anticipated	None anticipated
Lough Derg, North-east Shore SAC (002241)	None anticipated	None anticipated	None anticipated	None anticipated	None anticipated
Lower River Suir SAC (002137)	None anticipated	None anticipated	None anticipated	None anticipated	None anticipated
Killeglan Grassland SAC	None anticipated	None anticipated	None anticipated	None anticipated	None anticipated
Middle Shannon Callows SPA	None anticipated	None anticipated	None anticipated	None anticipated	None anticipated
Moanour Mountain SAC (002257)	None anticipated	None anticipated	None anticipated	None anticipated	None anticipated
Philipston Marsh SAC (001847)	None anticipated	None anticipated	None anticipated	None anticipated	None anticipated
Redwood Bog SAC (002353)	None anticipated	None anticipated	None anticipated	None anticipated	None anticipated
River Barrow and River Nore SAC (002162)	None anticipated	None anticipated	None anticipated	None anticipated	None anticipated
River Little Brosna Callows SPA (004086)	None anticipated	None anticipated	None anticipated	None anticipated	None anticipated
Scohaboy (Sopwell) Bog SAC (002206)	None anticipated	None anticipated	None anticipated	None anticipated	None anticipated
Sharavogue Bog SAC (000585)	None anticipated	None anticipated	None anticipated	None anticipated	None anticipated
Silvermine Mountains SAC (000939)	None anticipated	None anticipated	None anticipated	None anticipated	None anticipated
Silvermines Mountains West SAC (002258)	None anticipated	None anticipated	None anticipated	None anticipated	None anticipated
Slievefelim to Silvermines Mountains SPA (004165)	None anticipated	None anticipated	None anticipated	None anticipated	None anticipated
River Little Brosna Callows SPA	None anticipated	None anticipated	None anticipated	None anticipated	None anticipated
Redwood Bog SAC	None anticipated	None anticipated	None anticipated	None anticipated	None anticipated
Lough Derg North east shore SAC	None anticipated	None anticipated	None anticipated	None anticipated	None anticipated
Lough Derg Shannon SPA	None anticipated	None anticipated	None anticipated	None anticipated	None anticipated

Lower River Shannon SAC	None anticipated	None anticipated	None anticipated	None anticipated	None anticipated
River Shannon and River Fergus SPA	None anticipated	None anticipated	None anticipated	None anticipated	None anticipated
Kilcarren-Firville Bog SAC (	None anticipated	None anticipated	None anticipated	None anticipated	None anticipated

### Assessment of Likely Effects

Potential impacts on Natura 2000 sites from the proposed Heritage Strategy objectives are not anticipated.

Based on the available information and data it is not expected that the proposed project will cause any impact on the SAC's or SPA's located within the potential Zone of Impact. It is of such a scale that it will cause neither change nor have any significant adverse direct, indirect or secondary impacts on the integrity of any Natura 2000 sites within the threshold distance.

More specifically, there will be no reduction in habitat area; no disturbance of key species, habitat or species fragmentation; no reduction in species density; no changes in key indicators of conservation value. Little significant negative impact to local flora will occur and in fact native Flora and Fauna should benefit from the proposed strategy.

Potential negative impacts on Natura 2000 sites from the proposed Heritage Strategy objectives of Tipperary Co. Co. are not anticipated.

Based on the available information and data is not expected that the proposed strategy will cause any negative impact on the SAC's or SPA's located within the Zol..

More specifically, there will be no reduction in habitat area; no disturbance of key species, habitat or species fragmentation; no reduction in species density; no changes in key indicators of conservation value and no climate change brought about

### Likely Significant Effects

#### Identification of Potential Impacts

The identification of potential impacts in this report uses the “*source-pathway-receptor*” model. According to this model, for an impact to exist, all three of the following criteria must be met: -

- Some aspect of the plan or project must act as a source of an impact,
- There must be a pathway capable of conveying the impact to a receptor, and
- The receptor must be sensitive to the impact.

### **In Combination/Cumulative Impacts**

This proposed Heritage Strategy will have no significant negative impact in combination or cumulatively with other planned projects proposed for the locale.

No significant effects as a result of the proposed strategy in relation to disturbance, displacement or mortality of faunal species has been identified. Specifically there will be no loss of Key Ecological Receptor habitats or species. There will be no impact on population numbers of Key Ecological Receptors.

There will be no fragmentation of Key Ecological Receptor habitats or species.

There is no possibility for negative impact on aquatic Natura 2000 sites within the potential impact zone.

There will be no effect on the natural range of protected habitats or species, and areas they cover within that range, are stable or increasing

The specific structure and functions which are necessary for the long-term maintenance of species and habitats exist and are likely to continue to exist for the foreseeable future

The conservation status of habitats and species is favourable.

There will be no effects on the population dynamics data on the species concerned indicate that it is maintaining itself on a long-term basis as a viable component of its natural habitats

The natural range of the species will neither be reduced nor is likely to be reduced for the foreseeable future

There is and will probably continue to be, a sufficiently large habitat to maintain its population on a long-term basis.

### **Screening Conclusion and Statement**

The purpose of this Appropriate Assessment Screening is to ascertain whether the high-level vision, mission and strategic objectives for the management and protection of heritage in County Tipperary as outlined in the Draft Heritage Strategy 2025-2030 have the potential to negatively impact Natura 2000 sites within the possible Zone of Impact (Zoi).

They are of such a scale that they will cause neither change nor have any significant adverse direct, indirect or secondary impacts on the integrity of any Natura 2000 sites within the threshold distance. There are no "in combination" effects from this proposed strategy anticipated. More specifically, there will be no reduction in habitat area; no disturbance of key species, habitat or species fragmentation; no reduction in species density; no changes in key indicators of conservation value, and no climate change brought about to the SAC and SPA sites within the Zone of Impact.

Following the review of the project in accordance with the Guidance for Planning Authorities entitled “Appropriate Assessment of Plans and Projects in Ireland”, this screening has established that the project poses no potential for secondary impacts on the Natura 2000 sites and as such requires no further Natura Impact Assessment.

**Predicted and Residual impact of the proposal**

This Screening Report has analysed the potential impacts of the proposed Heritage Strategy on the receiving natural environment and evaluated their effects, both individually and in combination with other plans and projects, in view of the conservation objectives of the relevant European sites. This report has been prepared in line with the Habitats Directive, as transposed into Irish law by the Habitats Regulations, relevant case law and guidance from the European Commission, the Department of the Environment, Heritage and Local Government and the Office of the Planning Regulator, on the basis of objective information and adhering to the precautionary principle.

Following a comprehensive evaluation of the potential direct, indirect and cumulative impacts on the qualifying interests for the Natura 2000 sites it has been concluded by the author of this report that there will be no residual impacts and the proposed objectives will not have any adverse effects on the integrity of any Natura 2000 sites within the potential Zone of impact.

Gerry Tobin BSc, MA  
**Environmental Consultant**  
**April 2026**

## Bibliography

- CIRIA, (2002). Control of Water Pollution on Construction Sites- Guide to Good Practice (SP156). 6 Storey's Gate, Westminster, London.
- CIRIA, (2001). Control of Water Pollution from Construction sites- Guidance for Consultants and Contractors (C532). 6 Storey's Gate, Westminster, London.
- CIRIA, (2006). Control of Water Pollution from Linear Construction Projects -Technical Guidance (C649). 6 Storey's Gate, Westminster, London.
- CIRIA, (2006). Control of Water Pollution from Linear Construction Projects- Site Guide (C649). 6 Storey's Gate, Westminster, London.
- CIRIA, (2005). Environmental Good Practice – Site Guide (C650). 6 Storey's Gate, Westminster, London.
- Dempsey E., O' Cleary M. "The Complete Guide to Ireland's Birds" 2nd Edition., Gill and Macmillan 2002.
- DoEHLG, (2010) 'Appropriate Assessment of Plans and Projects in Ireland. Guidance for Planning Authorities'. National Parks and Wildlife Service, Department of the Environment, Heritage and Local Government, Dublin. Town D0177-01. Environmental Protection Agency..
- EEC" (2019/C 33/01) "Managing Natura 2000 sites - The provisions of Article 6 of the 'Habitats' Directive 92/43/
- EEC" (2021/C 437/01) "Assessment of plans and projects in relation to Natura 2000 sites – Methodological guidance on Article 6(3) and (4) of the Habitats Directive 92/43/
- DoEHLG, (2010) 'Appropriate Assessment of Plans and Projects in Ireland. Guidance for Planning Authorities'. National Parks and Wildlife Service, Department of the Environment, Heritage and Local Government, Dublin. Town D0177-01. Environmental Protection Agency..
- EC Directive on The Conservation of Natural habitats and of Wild Fauna and Flora (Habitats Directive) 1992.
- European Commission. 2000. Managing Natura 2000 Sites: The provisions of Article 6 of the 'Habitats' Directive 92/43/EEC. Office for Official Publications of the European Communities, Luxembourg.
- European Commission. 2002. Assessment of plans and projects significantly affecting Natura 2000 sites. Methodological guidance on the provisions of Article 6(3) and (4) of the Habitats Directive 92/43/EEC. Office for Official Publications of the European Communities, Luxembourg.
- European Commission (2000) Communication from the Commission on the Precautionary Principle. Office for Official Publications of the European Communities, Luxembourg.
- European Commission (2000a) Managing Natura 2000 sites: the provisions of Article 6 of the 'Habitats' Directive 92/43/EEC.

**Luxembourg: Office for Official Publications of the European Communities.**

- **European Commission (2002) Assessment of Plans and Projects significantly affecting Natura 2000 sites, Methodological guidance on the provisions of Article 6(3) and 6(4) of the Habitats Directive 92/43/EC. Luxembourg: Office for Official Publications of the European Communities.**
- **European Commission (2002) Managing Natura 2000 sites: The provisions of Article 6 of 'The Habitats' Directive 92/43/EEC.**
- **European Commission (2006) Nature and Biodiversity Cases: Ruling of the European Court of Justice. Office for Official Publications of the European Communities, Luxembourg.**
- **European Commission (2007) Guidance document on the strict protection of animal species of Community interest under the Habitats Directive 92/43/EEC.**
- **European Commission (2007a) EU Guidance document on Article 6(4) of the 'Habitats Directive' 92/43/EEC – Clarification of the concepts of: alternative solutions, imperative reasons for overriding public interest, compensatory measures, overall coherence. Opinion of the Commission.**
- **European Commission (2007) Directorate-General for Environment, Terry, A. and Temple, H., The status and distribution of European mammals, Publications Office, 2007,**
- **European Commission (2013) Interpretation Manual of European Union habitats EUR 28.**
- **European Commission (2017) Natura 2000 and spatial planning, Publications Office, 2017, <https://data.europa.eu/doi/10.2779/2947>.**
- **European Commission (2019) Managing Natura 2000 sites: The provisions of Article 6 of 'The Habitats' Directive 92/43/EEC. (Commission Notice 2018)**
  
- **European Commission (2020) Directorate-General for Environment, Guidance document on wind energy developments and EU nature legislation, Publications Office of the European Union, 2021, <https://data.europa.eu/doi/10.2779/095188>**
- **European Commission (2021) Assessment of plans and projects in relation to Natura 2000 Sites - Methodological guidance on Article 6(3) and (4) of the Habitats Directive 92/43/EC. Available at: <https://eur-lex.europa.eu/legalcontent/EN/TXT/?uri=CELEX%3A52021XC1028%2802%29>**
- **European Commission (2021) Guidance document on the strict protection of animal species of Community interest under the Habitats Directive. (Commission Notice 2018) Available at: [https://eur-lex.europa.eu/legal-content/EN/TXT/PDF/?uri=PI\\_COM:C\(2021\)7301](https://eur-lex.europa.eu/legal-content/EN/TXT/PDF/?uri=PI_COM:C(2021)7301)**

- **European Commission (2021) The strict protection of animal species of Community interest under the Habitats Directive, Guidance document – A summary. Directorate-General for Environment, Publications Office of the European Union, Available at: <https://data.europa.eu/doi/10.2779/3123>**
- **European Commission (2022) Directorate-General for Environment, European redlist of birds 2021, <https://data.europa.eu/doi/10.2779/959320>**
- **European Commission. 2007. Guidance document on the strict protection of animal species of Community interest under the Habitats Directive 92/43/EEC**
- **European Commission. 2007. EU Guidance document on Article 6(4) of the 'Habitats Directive' 92/43/EEC. Clarification of the concepts of: alternative solutions, imperative reasons of overriding public interest, compensatory measures, overall coherence, opinion of the Commission. IEEM. 2006.**
- **Fossitt J., "A Guide to Habitats in Ireland", The Heritage Council 2000.**
- **Hayden T and Harrington R., 2000, "Exploring Irish Mammals" Town House and Country House Ltd, .**
- **IFI, (2010). IFI Biosecurity Protocol for Field Survey Work. Inland Fisheries Ireland, Swords Business Campus, Swords, Co. Dublin, Ireland.**
- **IFI, (2016). Guidelines on Protection of Fisheries During Construction Works in and Adjacent to Waters. Inland Fisheries Ireland, Swords Business Campus, Swords, Co. Dublin, Ireland.**
- **Marnell, F, Kingston, N and Looney, D. NPWS, Ireland Red List no. 3 Terrestrial Mammals, Dept. Of the Environment, Heritage and Local Govt. Dublin 2009.**
- **NPWS . Site synopses of Natura sites accessed July 2022**
- **NPWS (2013a) The Status of EU Protected Habitats and Species in Ireland. Habitat Assessments Volume 2. Version 1.0. Unpublished Report, National Parks & Wildlife Services. Department of Arts, Heritage and the Gaeltacht, Dublin, Ireland.**
- **NPWS (2013b) The Status of EU Protected Habitats and Species in Ireland. Species Assessments Volume 3, Version 1.0. Unpublished Report, National Parks & Wildlife Services. Department of Arts, Heritage and the Gaeltacht, Dublin, Ireland.**
- **NPWS Conservation Objectives Natura Sites accessed July 2022**
- **NRA, (2010). Guidelines on the Management of Noxious Weeds and Non-native Invasive Plant Species on National Roads. National Roads Authority, St Martin's House, Waterloo Roads, Dublin 4.**

- **OPR (2021) Appropriate Assessment Screening for Development Management, Practice Note PN01. Office of the Planning Regulator March 2021.**
- **OPR (2021) Environmental Impact Assessment Screening, Practice Note PN02. Office of the Planning Regulator June 2021.**
- **Regan, E.C., Nelson, B., Aldwell, B., Bertrand, C., Bond, K., Harding, J., Nash, D., Nixon, D., & Wilson, C.J. (2010) Ireland Red List no. 4 Butterflies, NPWS, Dept. Of the Environment, Heritage and Local Govt. Dublin 2009.**
- **Webb D.A., Parnell J. and Doogue D., 1996 “An Irish Flora”, Dungalgan Press Ltd, Dundalk.**
- **Whilde A., 1993 “The Irish Red Data Book 2: Vertebrates”, HMSO Belfast**
- **<https://www.opr.ie/wp-content/uploads/2021/03/9729-Office-of-the-Planning-Regulator-Appropriate-Assessment-Screening-booklet-15.pdf>**

